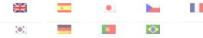


# weekly - semanario - hebdo - 週刊 - týdeník - Wochennotiz - 주간

A summary of all the things happening in the OpenStreetMap world

Home > Weekly > weeklyOSM 440

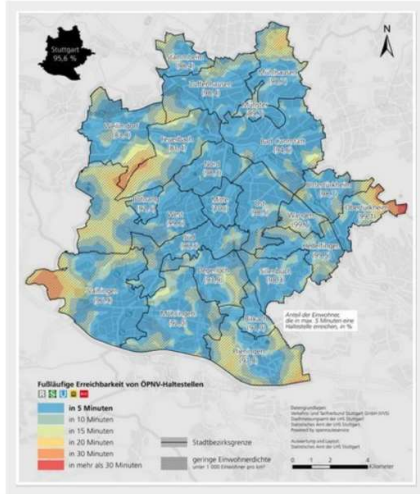
Language:



## weeklyOSM 440

weeklyteam Sunday December 30th, 2018 1 Comment

18/12/2018-24/12/2018



Walking time to the nearest public transport stop <sup>1</sup> | © City of Stuttgart © Map data OpenStreetMap contributors

### Mapping

- OSM South Africa are [raising funds](#) on GoFundMe to purchase historical topographic maps of Namibia. If funding is successful, the maps will be tiled for use in OSM editors, just like the topographic maps of South Africa itself which are [already available](#).

### Follow us on Twitter

Tweets by @WeeklyOSM

### Interesting Read

[OSM tags soon in German and French and in the long run in Spanish and Japanese.](#)

[Your submissions for weeklyOSM have become easier!](#)

[The maps that made 2016 extraordinary!](#)

[Overcoming language barriers with OpenStreetMap](#)

[WP OSM Plugin - a free WordPress plugin for a free map](#)

[Weekly Exercise - Pharmacies - weeks 06 and 07 in 2015 - Results](#)

[Weekly Exercise - Pharmacies - weeks 06 and 07 in 2015](#)

### Humanitarian OSM

- The minutes of the board meeting of HOT US Inc. on December 6 [have been published](#). The topics discussed during the meeting included the setup of an advisory board and the planned registration of a European branch in order to be eligible for EU programmes.
- HOT [announced](#) a partnership with tech hub iLab Liberia and the local OSM community to introduce the Open Cities Monrovia project. As 90 percent of the population in Monrovia is living in areas with very high flood risk, the project aims to improve understanding of unplanned settlements and make the slum communities more resilient to natural disasters.
- The project mamapa [is teaching](#) immigrants in Germany to contribute to international humanitarian mapping initiatives. The project, which is supported by BASF (Ludwigshafen) and CartONG, helps in a number of ways, i.e. assisting the activity of humanitarian relief staff on the ground, teaching immigrants new skills in geography and modern cartography, hastening their integration into German society and providing a directly appreciated humanitarian contribution.